


Please evaluate
my talk via the
mobile app!



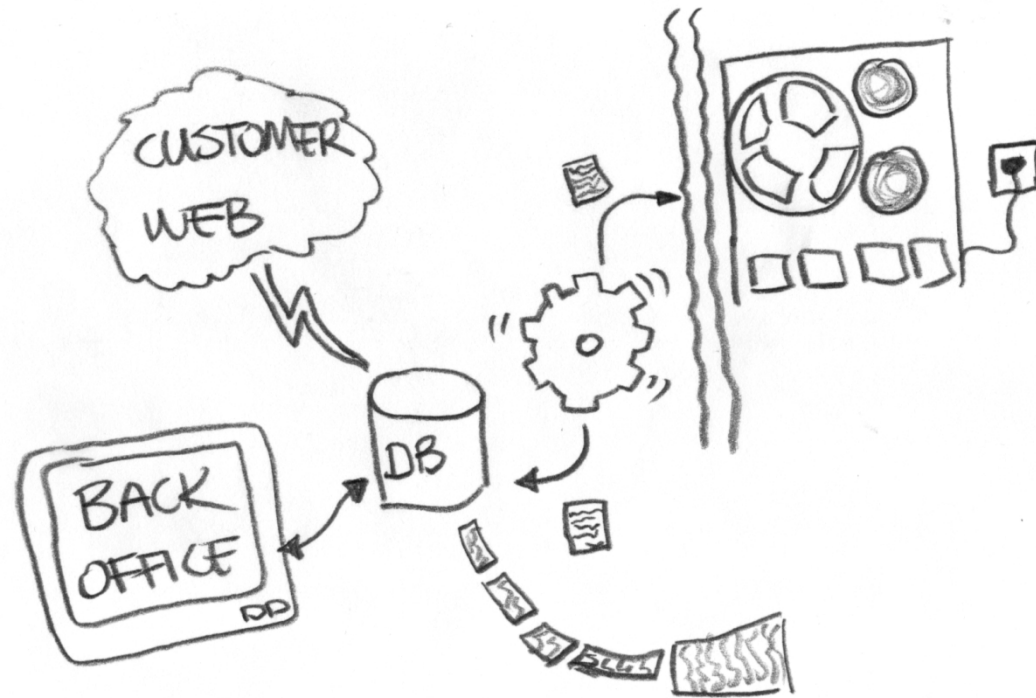
CONTIGUOUS IMPROVEMENT

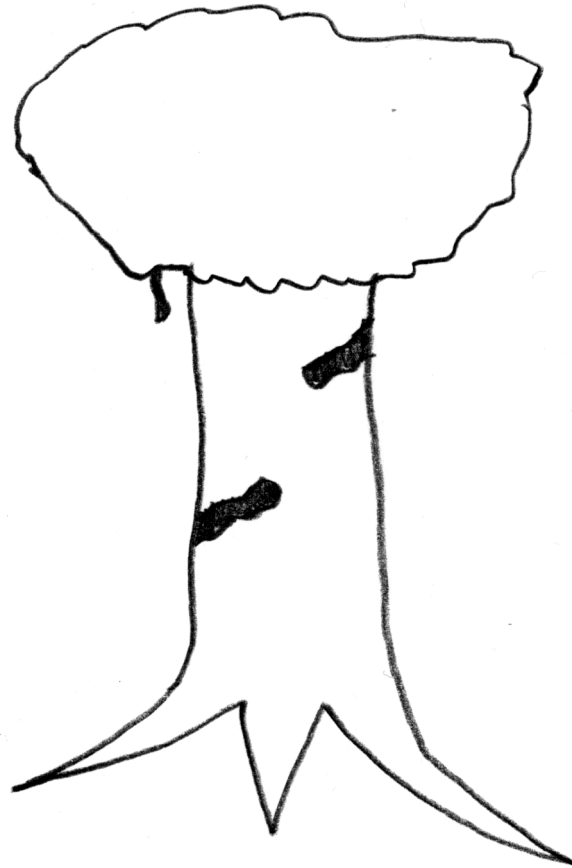
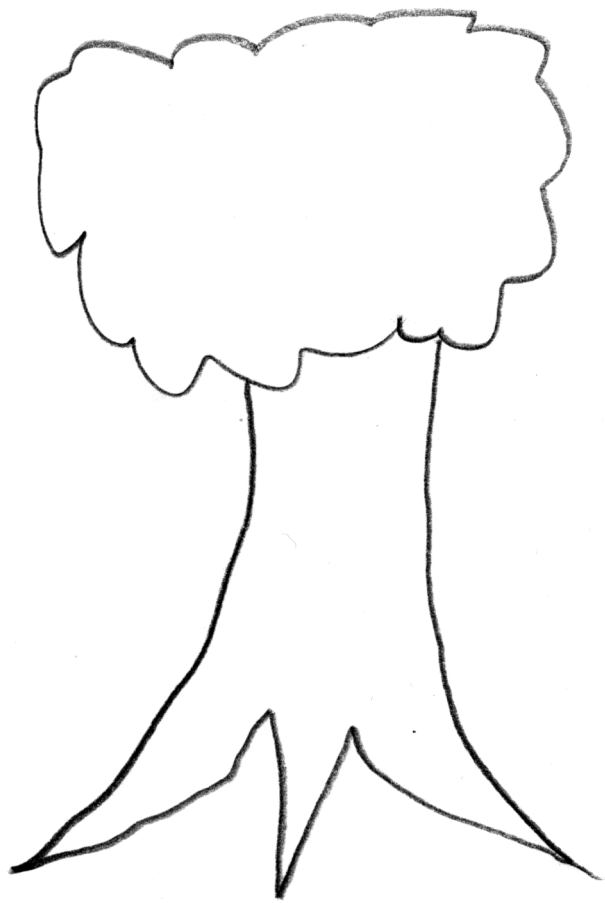
OVER

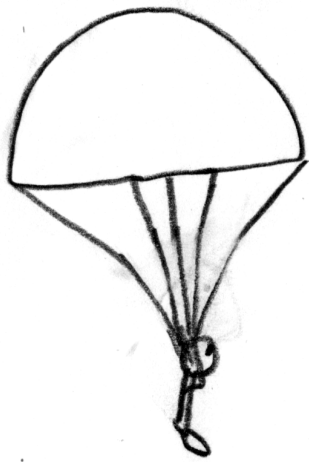
CONTINUOUS DELIVERY 

By @ellnestam









THE
DROP

THE
DROP

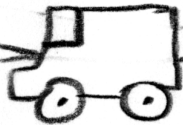
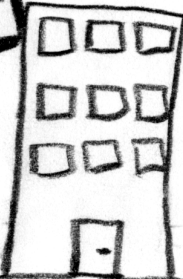
2010

2011

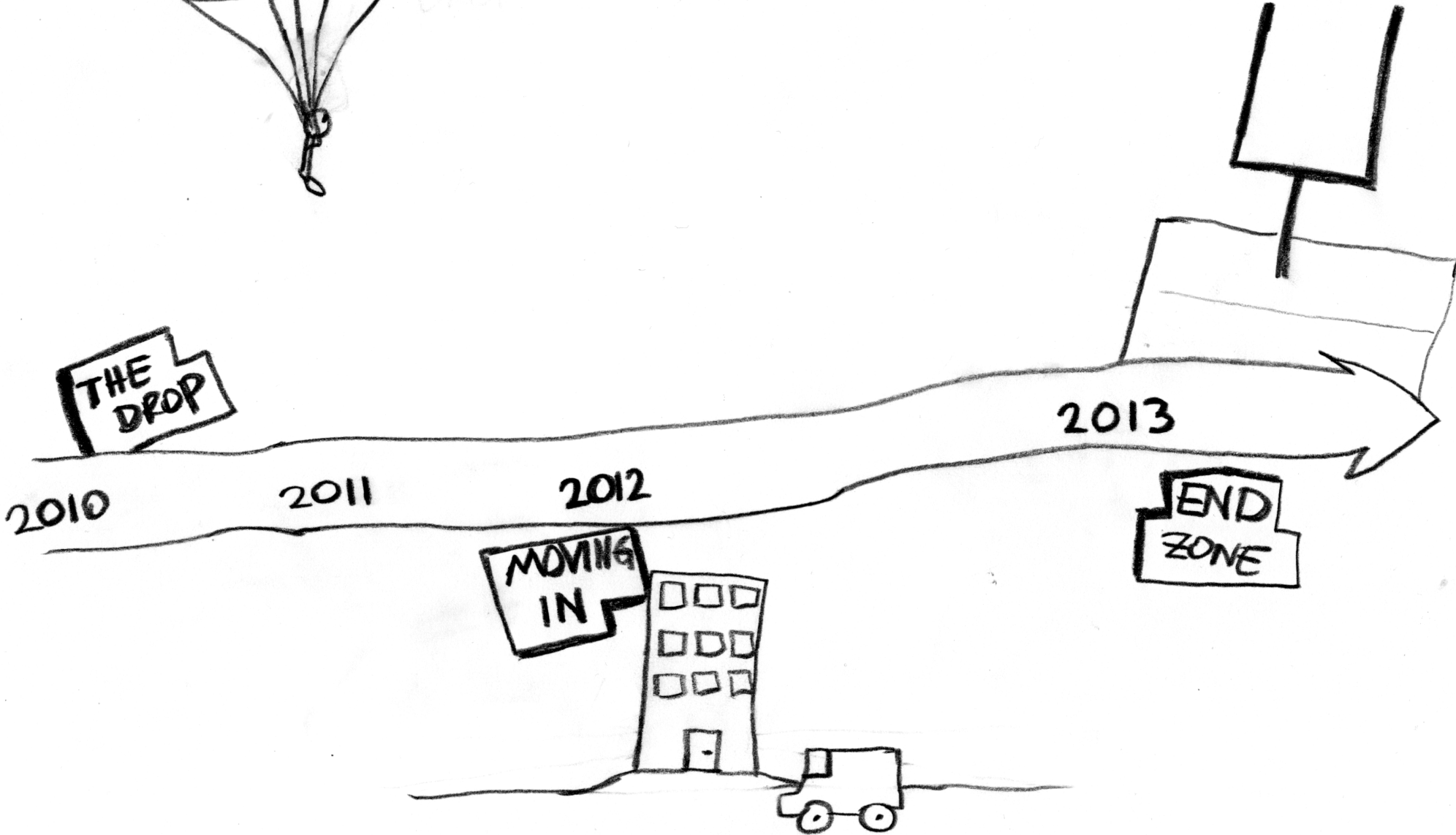
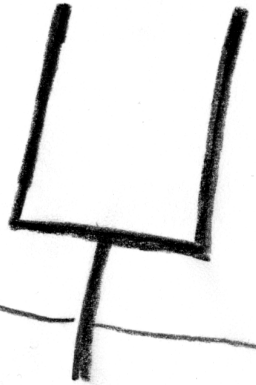
2012

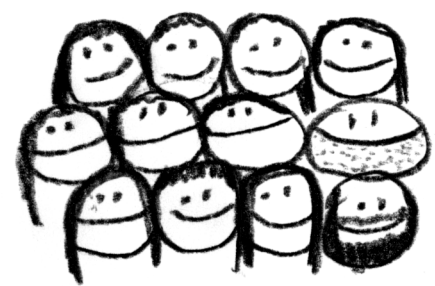
2013

MOVING
IN



END
ZONE



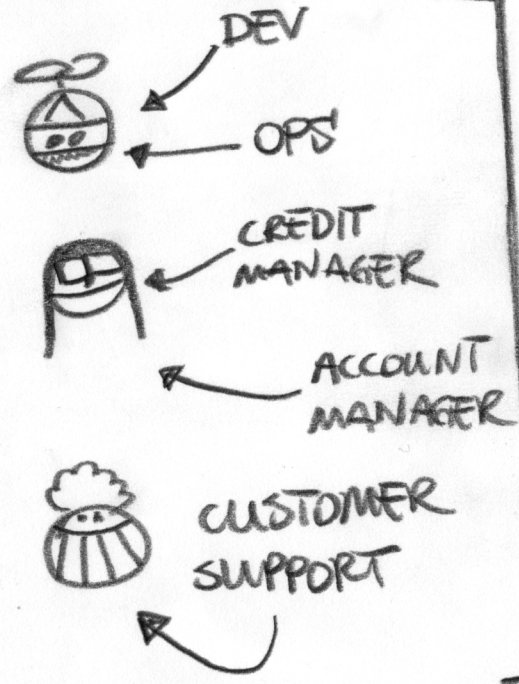


WHOLE TEAM

12

PEOPLE

THE TEAM CONSISTS OF:

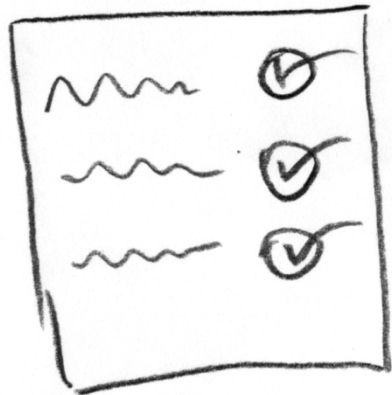


ACTIVITIES

MINIMALISM

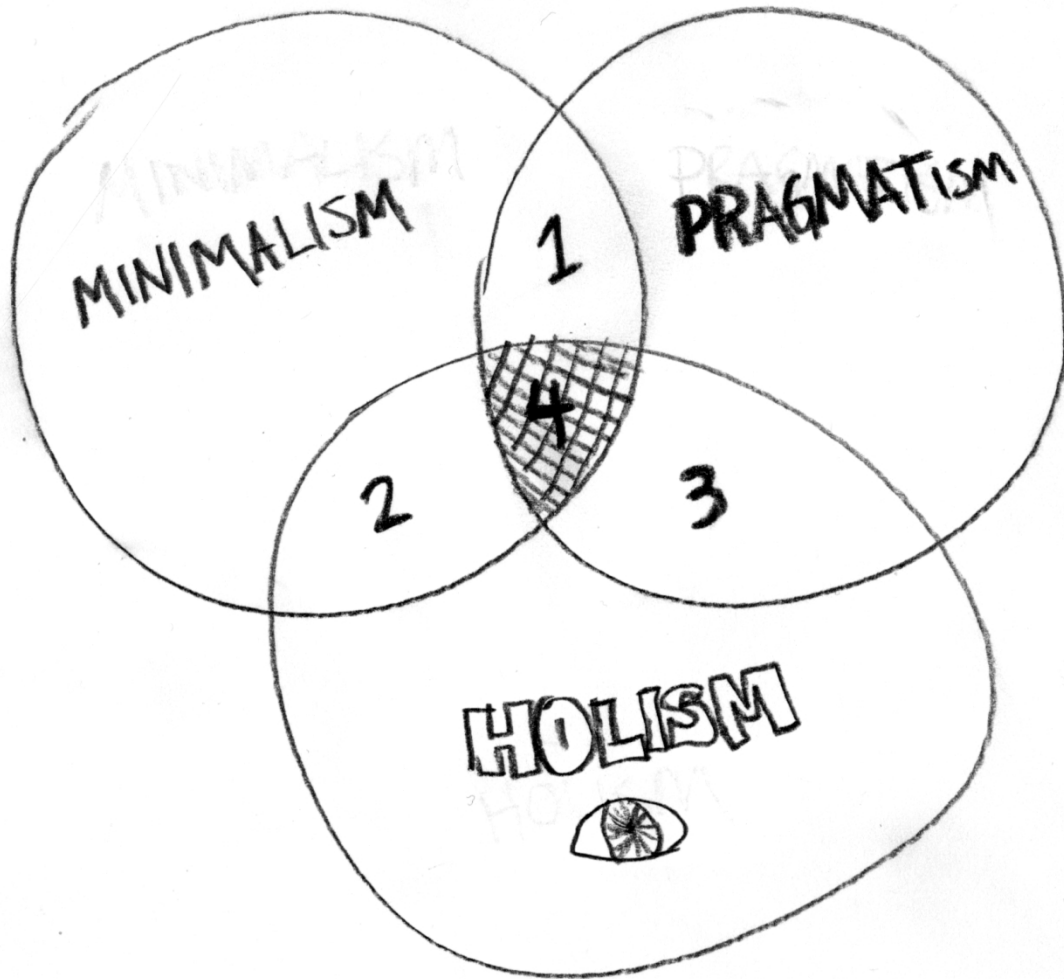
MINIMALISM

PRAGMATISM



HOLISM

SEE
THE
WHOLE



1. DUCT TAPING

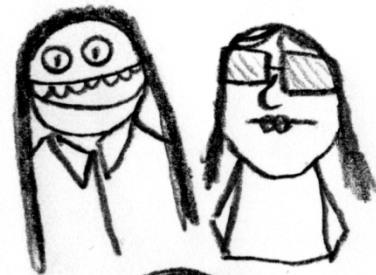
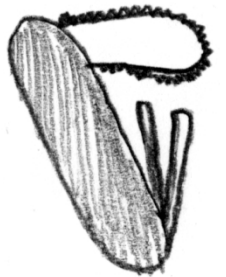


2. SPIKE / PROTOTYPE



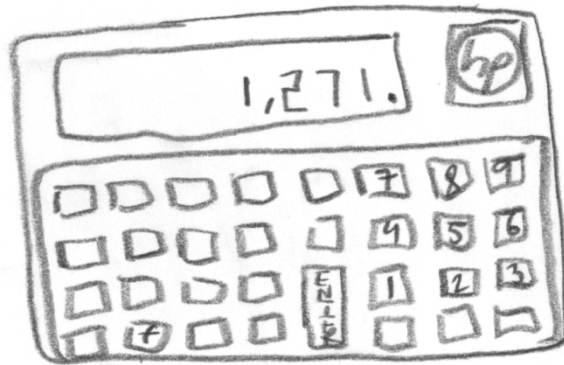
3. SWISS ARMY CHAINSAW

4. BUSINESS
ORIENTED
DEV
OPS

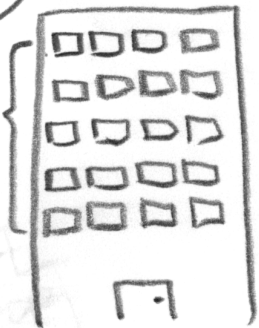




MPH



3 FLOORS
APART



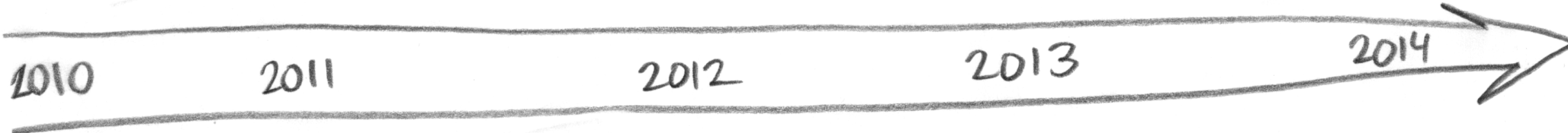
2010

2011

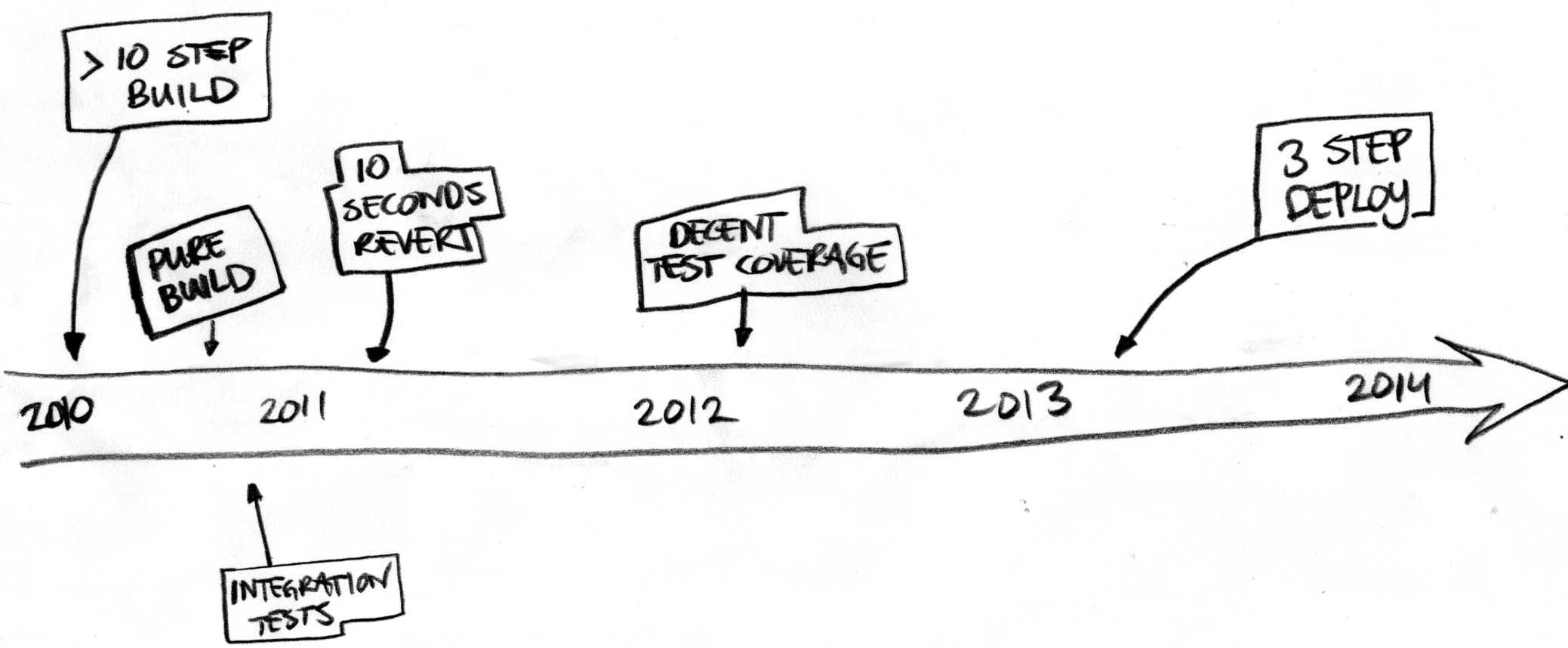
2012

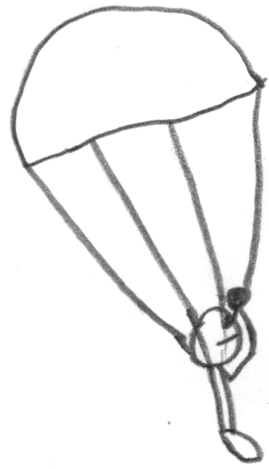
2013

2014



HOUSES





SINGLE
ARTIFACT
RELEASE

THE
DROP

2010

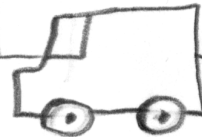
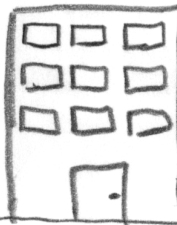
2011

2012

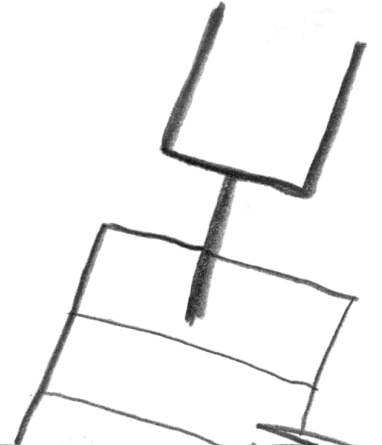
2013

2014

MOVING
IN



END
ZONE

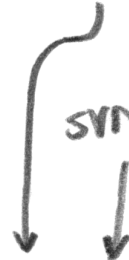




THE DROP

SINGLE ARTIFACT RELEASE

SVN → GIT



2010

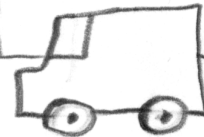
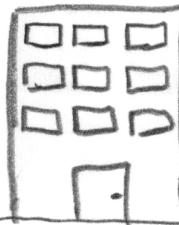
2011

2012

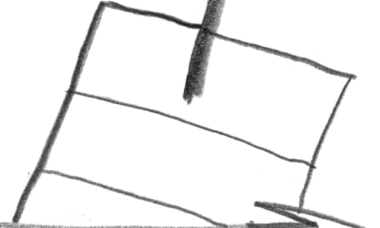
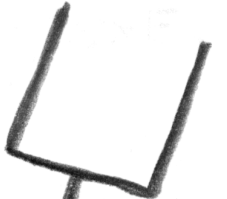
2013

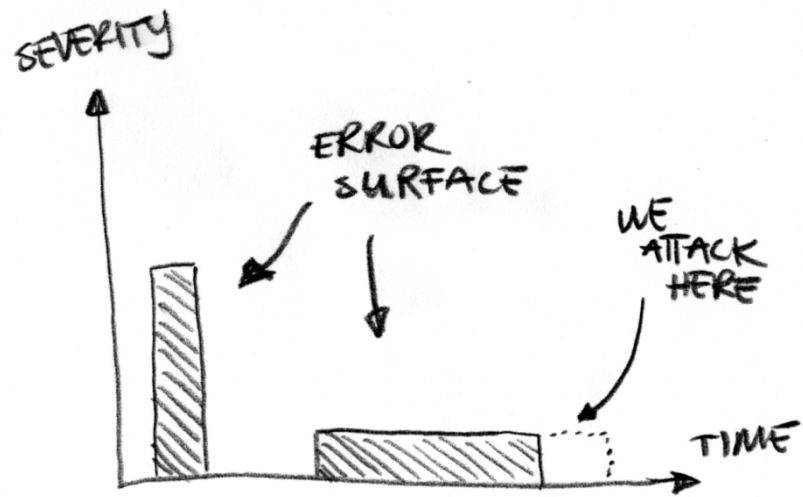
2014

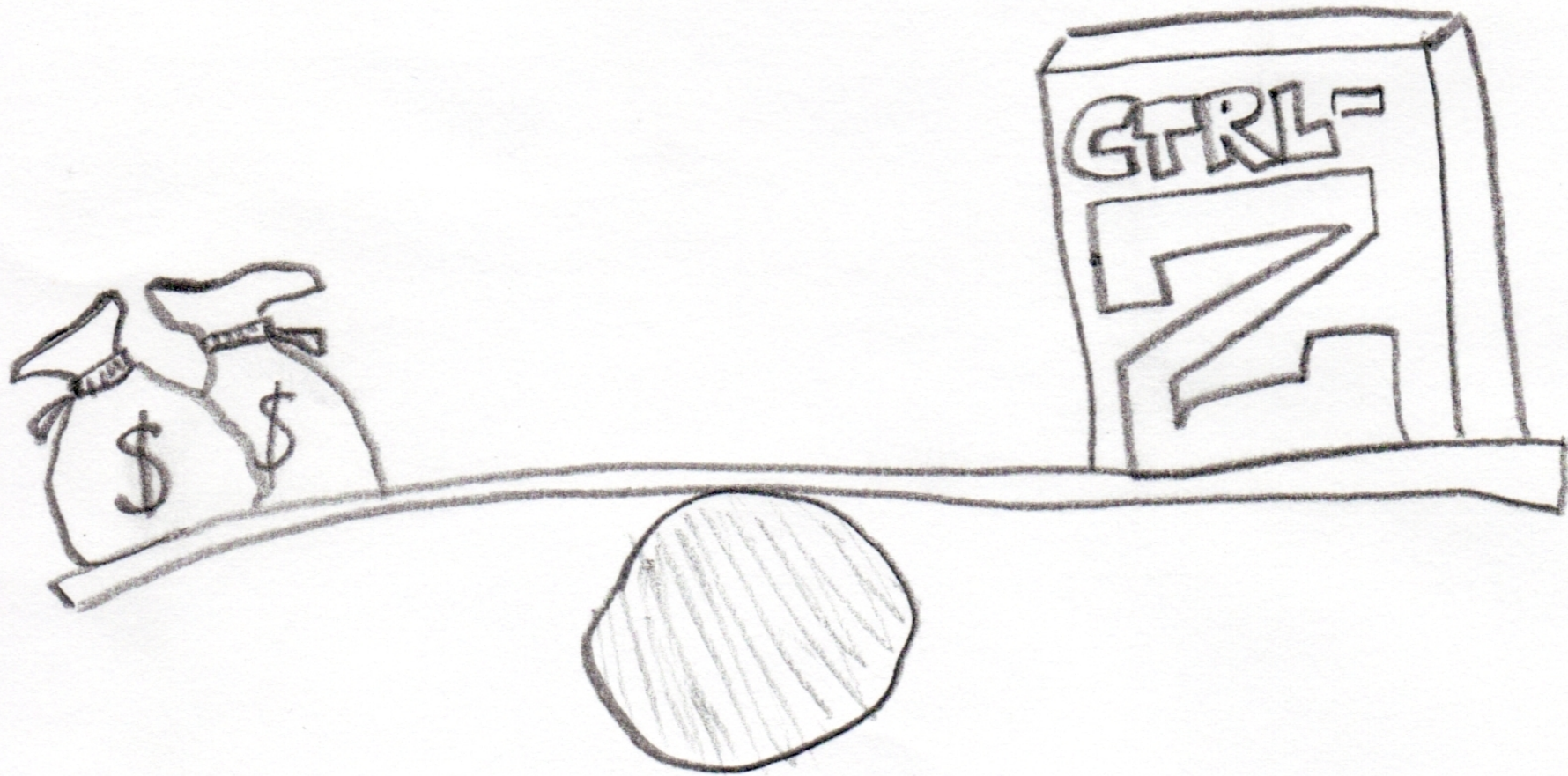
MOVING IN



END ZONE









THE DROP

SINGLE ARTIFACT RELEASE

SVN → GIT

NEW SAVINGS ACCOUNT TYPE

MPH

FINNISH SAVINGS

GRACE PERIOD

END ZONE

2010

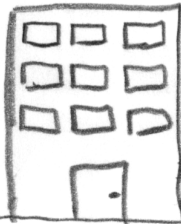
2011

2012

2013

2014

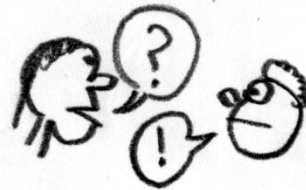
MOVING IN



CONVERSATION

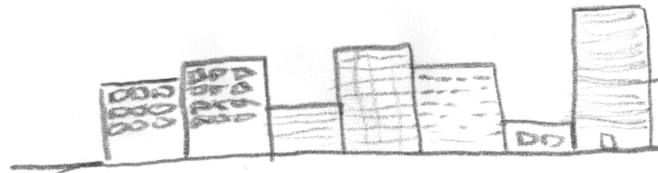


COMPLEX LOCKING





3 BLOCKS
APART



2010

2011

2012

2013

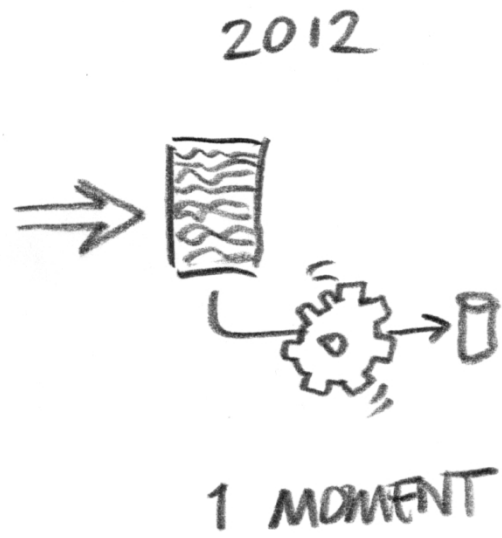
2014

HOUSES

CONTINUOUS DEPLOYMENT

2010-2011

[LET'S
SCHEDULE
A DATE]





MPH

THE DROP

SINGLE ARTIFACT RELEASE

SVN → GIT

END ZONE

2010

2011

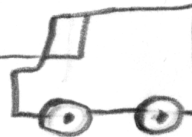
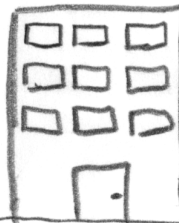
2012

2013

2014

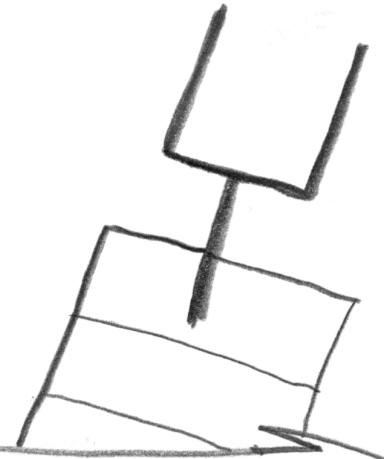
SLOW REPORTS

MOVING IN



NORWAY LOAN IMPORT

SWEDISH LOAN IMPORT



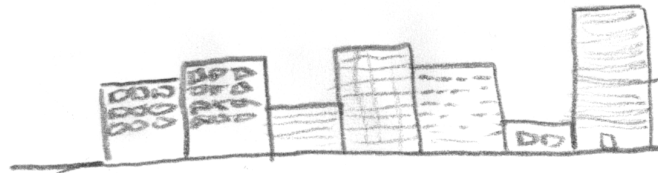


WHEN
ARE
YOU
DONE?

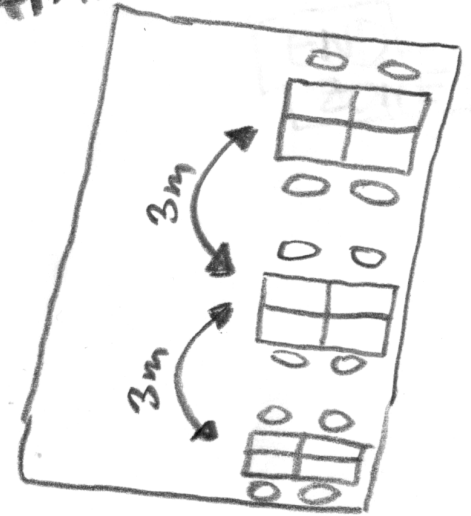
WE CAN
BE DONE
TODAY!



3 BLOCKS
APART



3 METERS
APART



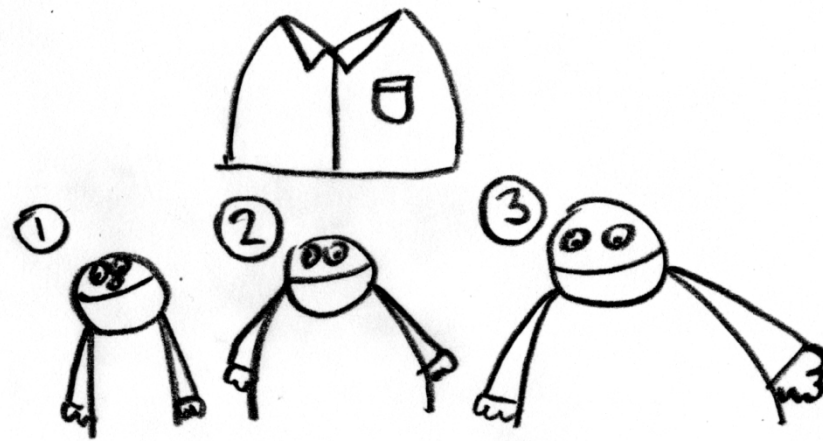
2010

2011

2012

2013

2014





MPH

REDUCING
EXTERNAL
JARS

LOAN
PARTNER/
REFERRAL

END
ZONE

SINGLE
ARTIFACT
RELEASE

DEBT
COLLECTION

SVN → GIT

ORM
→
SQL

THE
DROP

2010

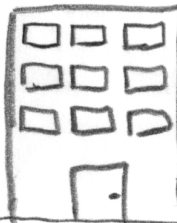
2011

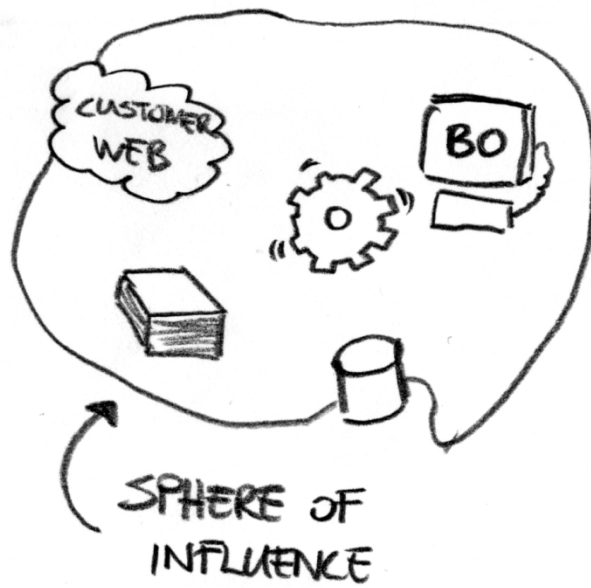
2012

2013

2014

MOVING
IN





AUTO-
MATE
~~EVERYTHING~~
A LOT

CONTINUOUS DEPLOYMENT

2010-2011

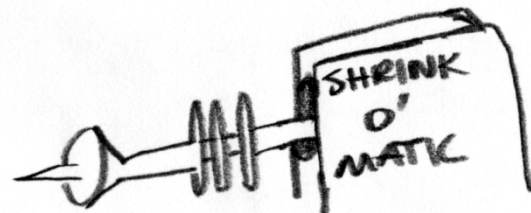
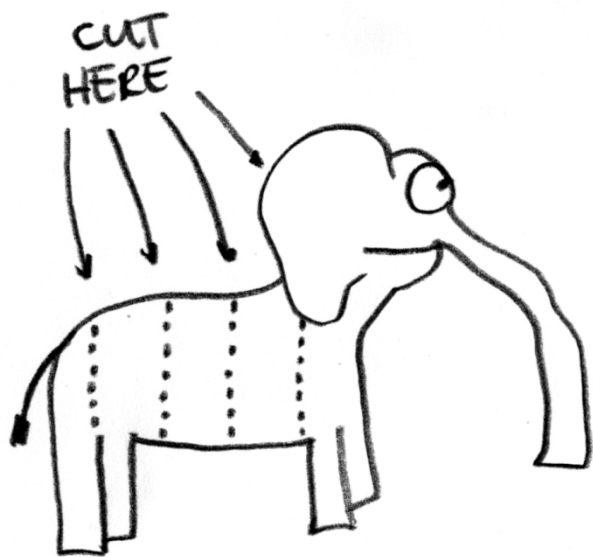
[LET'S
SCHEDULE
A DATE]

2012

[LET'S USE
THE LUNCH
BREAK]

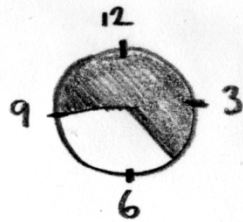
2013

[CAN YOU
PAUSE FOR
30 SECONDS]

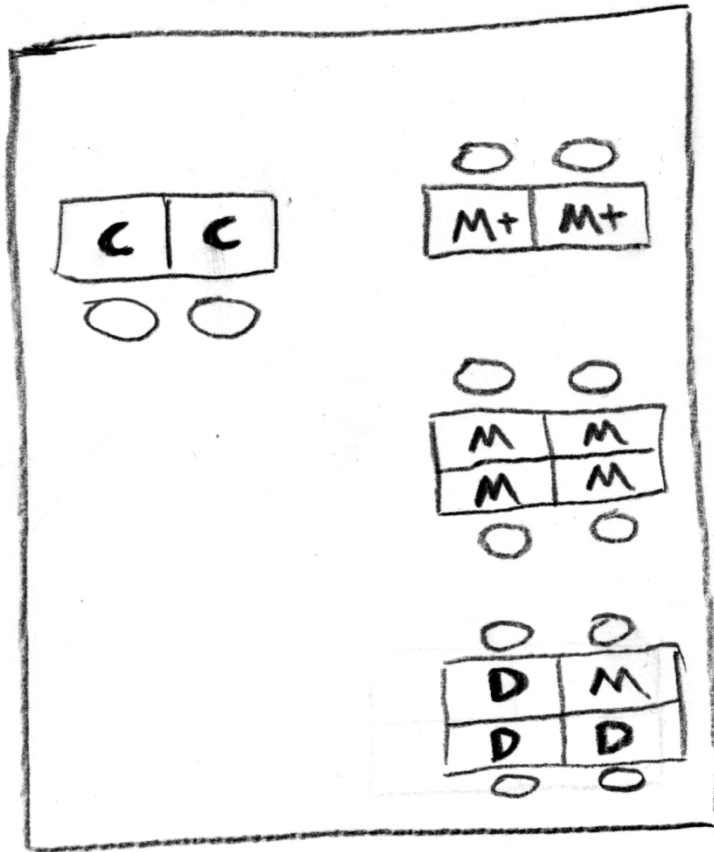


DEPLOYMENT PLANNING

M T W T F



■ OK
□ NOT OK

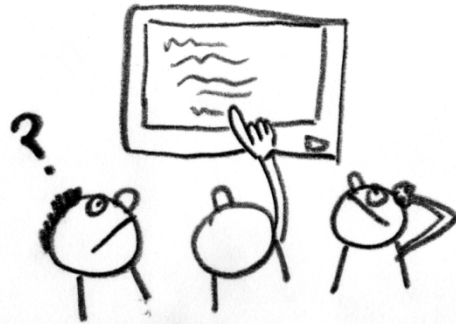


C = CUSTOMER SERVICE

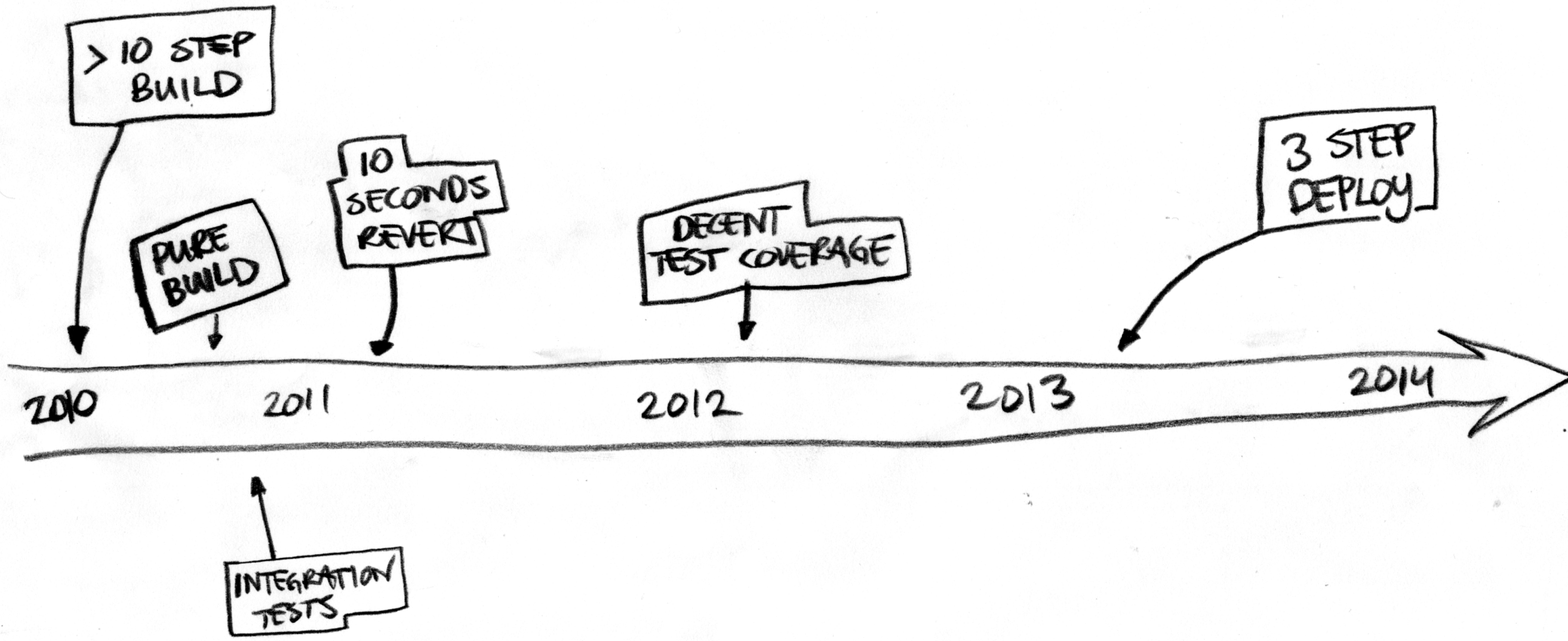
D = DEVS

M = CREDIT/ACCOUNT MANAGERS

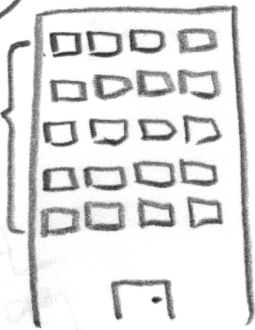
M+ = DOMAIN EXPERTS



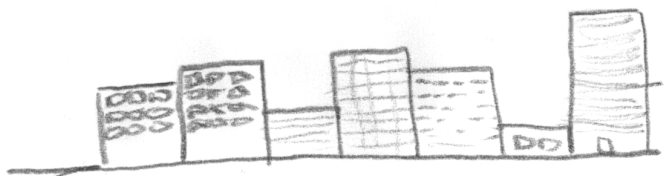
- PAIRING/MOBS
 - EXAMPLES
 - PROBLEM SOLVING HUDDLES
- OVER**
- > 1 HOUR MEETINGS
 - EMAIL PING-PONG



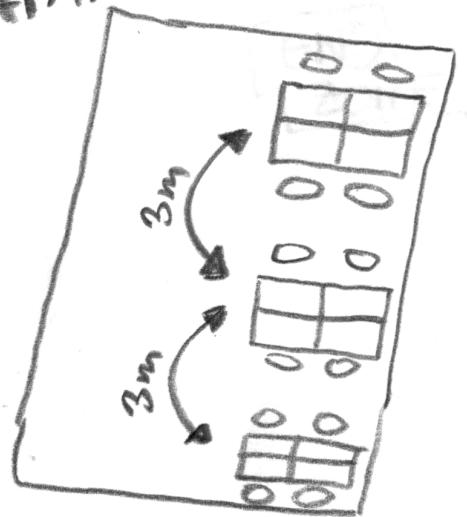
3 FLOORS
APART



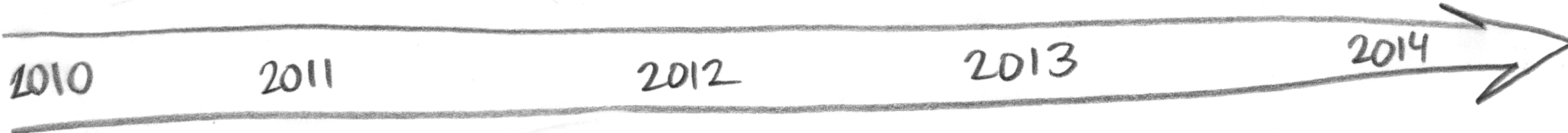
3 BLOCKS
APART

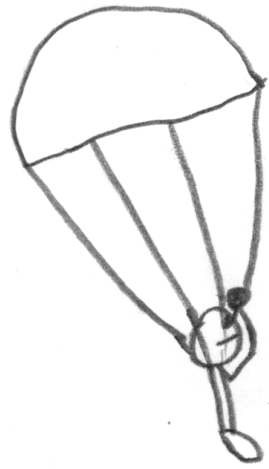


3 METERS
APART



2010 2011 2012 2013 2014





THE DROP

SINGLE ARTIFACT RELEASE

SVN → GIT

ORM → SQL

NEW SAVINGS ACCOUNT TYPE

DEBT COLLECTION

LVL UP W. GIT

FINNISH SAVINGS

REDUCING EXTERNAL JARS

LOAN PARTNER REFERRAL

GRACE PERIOD

END ZONE

2010

2011

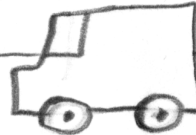
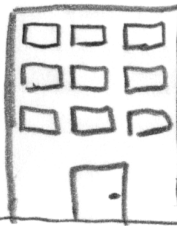
2012

2013

2014

SLOW REPORTS

MOVING IN



NORWAY LOAN IMPORT

SWEDISH LOAN IMPORT

SMALLER RELEASES MORE OFTEN

Please evaluate
my talk via the
mobile app!

